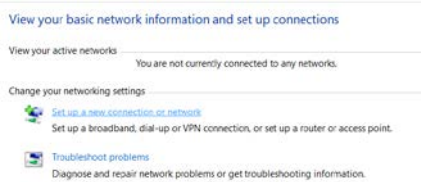


WIFI on Windows 10 (with Creators Update)

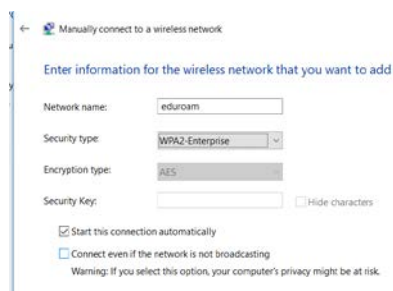
How to connect to WIFI “eduroam” and “RZUWsec” when automatic installation fails

Open the *Network and Internet settings* first. Depending on your Windows version you find it on clicking on the network and internet settings in the right corner (right click on the network icon) next to the clock or after you entered the network icon (right click on the network icon) on this following screen.

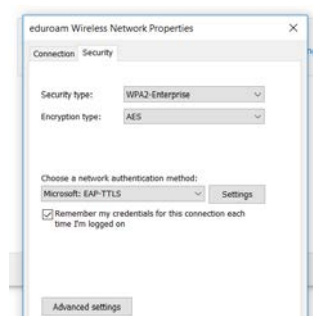
Go to *Network and Sharing Centre*



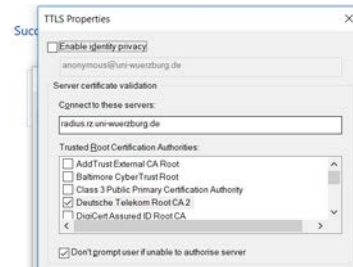
Select *Set up a new connection or network*



Enter “eduroam” or “RZUWsec” as name and select “WPA2-Enterprise” as security type, then click *Next*



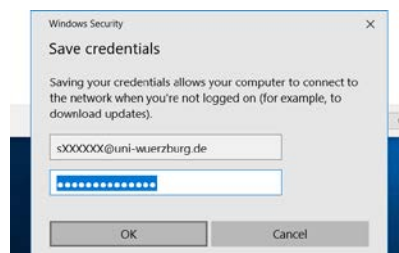
Select *Security* and choose “Microsoft: EAP-TTLS” as authentication method, then click on *Settings*



Check *Enable identity privacy* and fill in anonymous@uni-wuerzburg.de set radius.rz.uni-wuerzburg.de as Server select “Deutsche Telekom Root CA 2” as *Trusted Root Certification Authorities* → this certificate can be downloaded from:

https://www.rz.uni-wuerzburg.de/dienste/kommunikation/wireless/lan/konfiguration_der_endgeraete/

check *Don't prompt user if unable to authorize server*, click *OK*
Go to *Advanced Settings*, check *Specify authentication mode*, select “User authentication”, then click *Save credentials*



Fill in your university account and add @uni-wuerzburg.de and the password for your account.
(Example: s123456@uni-wuerzburg.de or ab12cd@uni-wuerzburg.de)
Click *OK*, close all open windows. You should be connected to WiFi now.

Still having problems?

it-support@uni-wuerzburg.de
or Call 0931 31 85050